

# The Archival Marshal

[Search Sources](#)

[Classification Requests](#)

[My Bookmarks](#)

[Finding Charts](#)

[Request PTFIDE Photometry](#)

**Search Photometric DB:**

*Examples: PTF1200aaa, PTF12aaa, dd.ddd dd.ddd,  
hh mm ss.s +dd mm ss.s*

Radius ("):

## Latest Marshal Updates:

*Oct 7, 2016:* The variable marshal has been migrated to a new server, and marshal data has been updated through mid-August 2016.  
*Mar 29, 2016:* Marshal data has now been updated through March 20, 2016, and the photometry problems should be fixed.

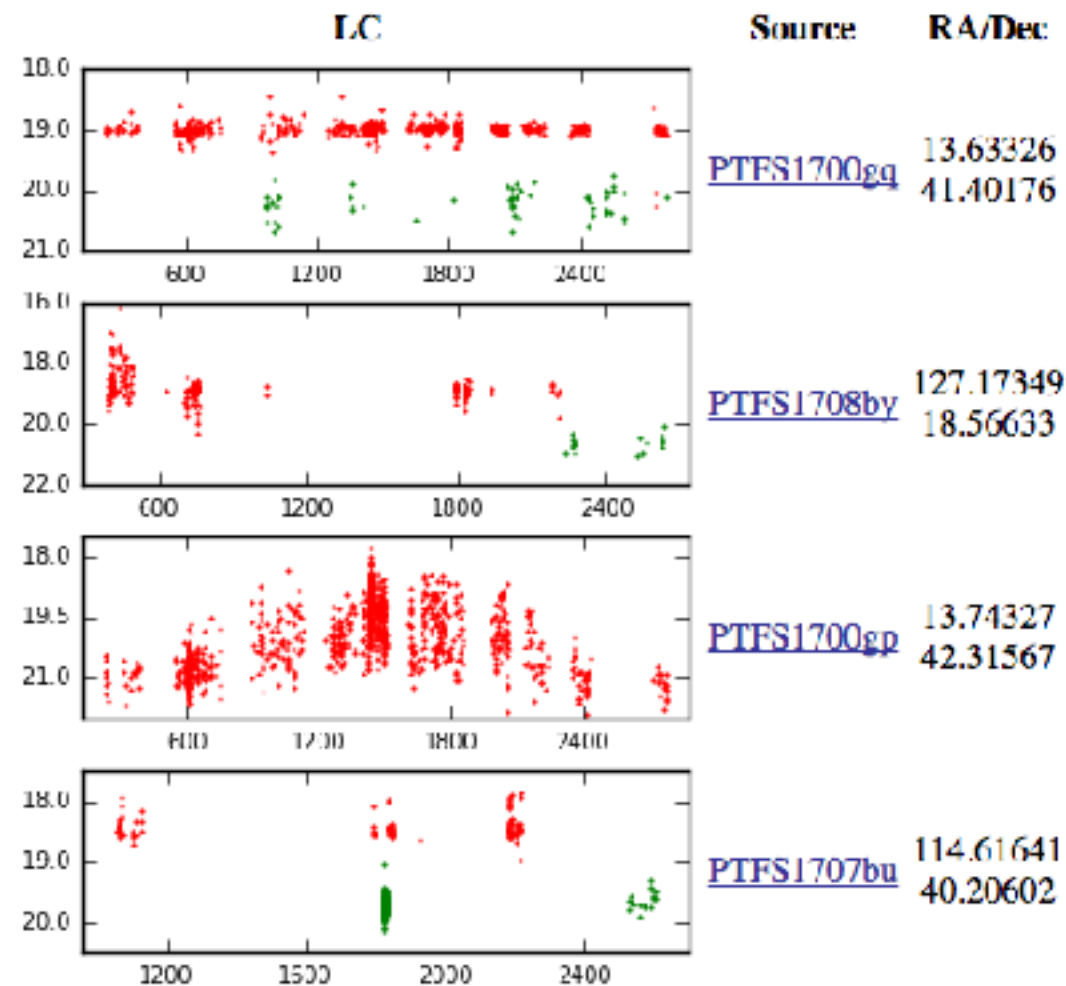
[<- Prev](#)

July 2017

[Next ->](#)

- [P200+DBSP \(2017-06-29 - 2017-07-01\)](#) - PTF Galactic  
Classification - Kulkarni
- [KeckI+LRIS \(2017-07-21 - 2017-07-22\)](#) - PTF Galactic  
Classification - Prince

## Latest Saved Sources



# The Archival Marshal

(not the Galactic Marshal)

[Search Sources](#)

[Classification Requests](#)

[My Bookmarks](#)

[Finding Charts](#)

[Request PTFIDE Photometry](#)

**Search Photometric DB:**

*Examples: PTF1200aaa, PTF12aaa, dd.ddd dd.ddd,  
hh mm ss.s +dd mm ss.s*

Radius ('):

**Latest Marshal Updates:**

*Oct 7, 2016:* The variable marshal has been migrated to a new server, and marshal data has been updated through mid-August 2016.

*Mar 29, 2016:* Marshal data has now been updated through March 20, 2016, and the photometry problems should be fixed.

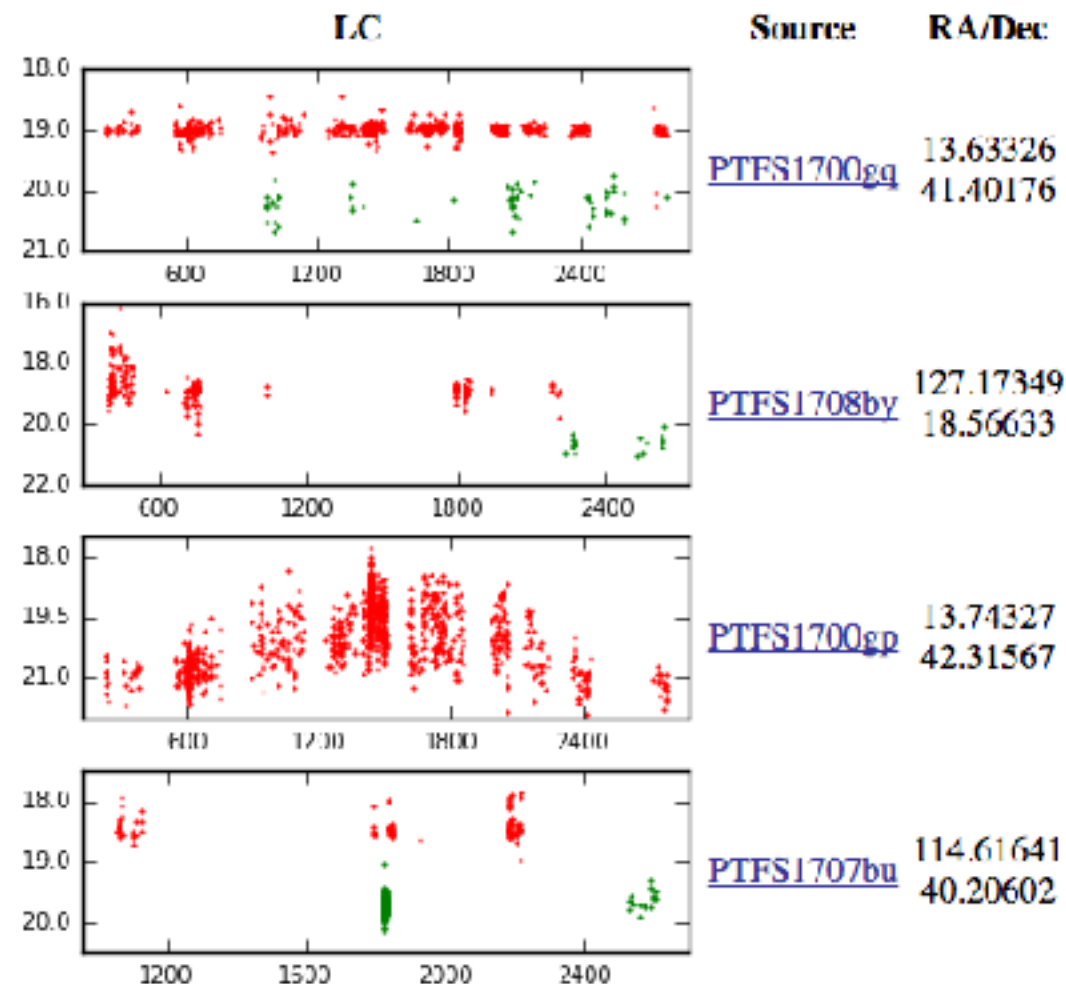
[<- Prev](#)

July 2017

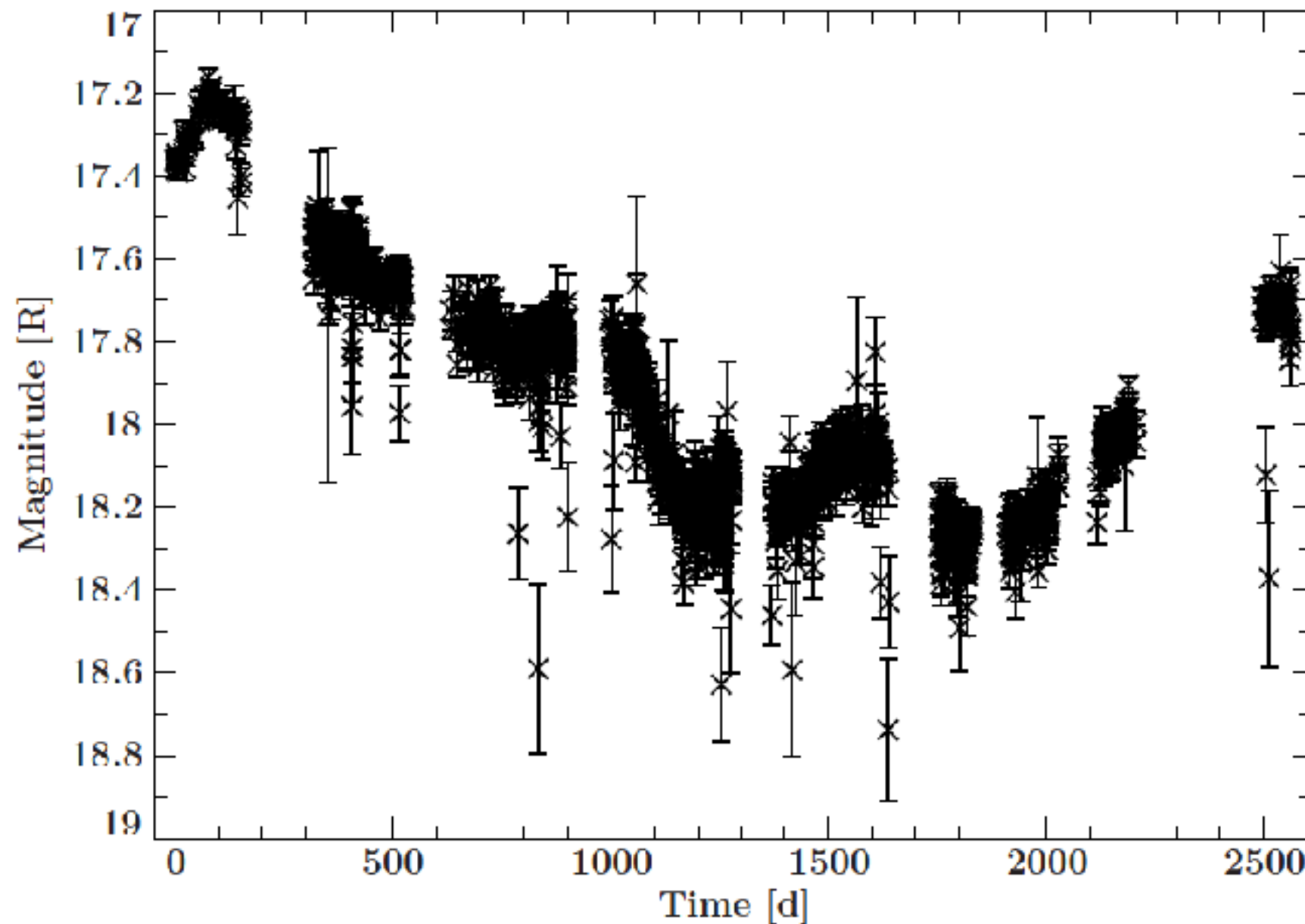
[Next ->](#)

- [P200+DBSP \(2017-06-29 - 2017-07-01\)](#) - PTF Galactic Classification - Kulkarni
- [KeckI+LRIS \(2017-07-21 - 2017-07-22\)](#) - PTF Galactic Classification - Prince

## Latest Saved Sources



# *The Archival Marshal*



- PSF photometry extracted from the science images
  - Partnership data
  - Public data (after the public data release)

# The Archival Marshal

(not the Galactic Marshal)

[Search Sources](#)

[Classification Requests](#)

[My Bookmarks](#)

[Finding Charts](#)

[Request PTFIDE Photometry](#)

Search Photometric DB:

Examples: *PTFS1200aaa*, *PTF12aaa*, *dd.ddd dd.ddd*,  
*hh mm ss.s +dd mm ss.s*

Radius ("):

## Latest Marshal Updates:

*Oct 7, 2016:* The variable marshal has been migrated to a new server, and marshal data has been updated through mid-August 2016.

*Mar 29, 2016:* Marshal data has now been updated through March 20, 2016, and the photometry problems should be fixed.

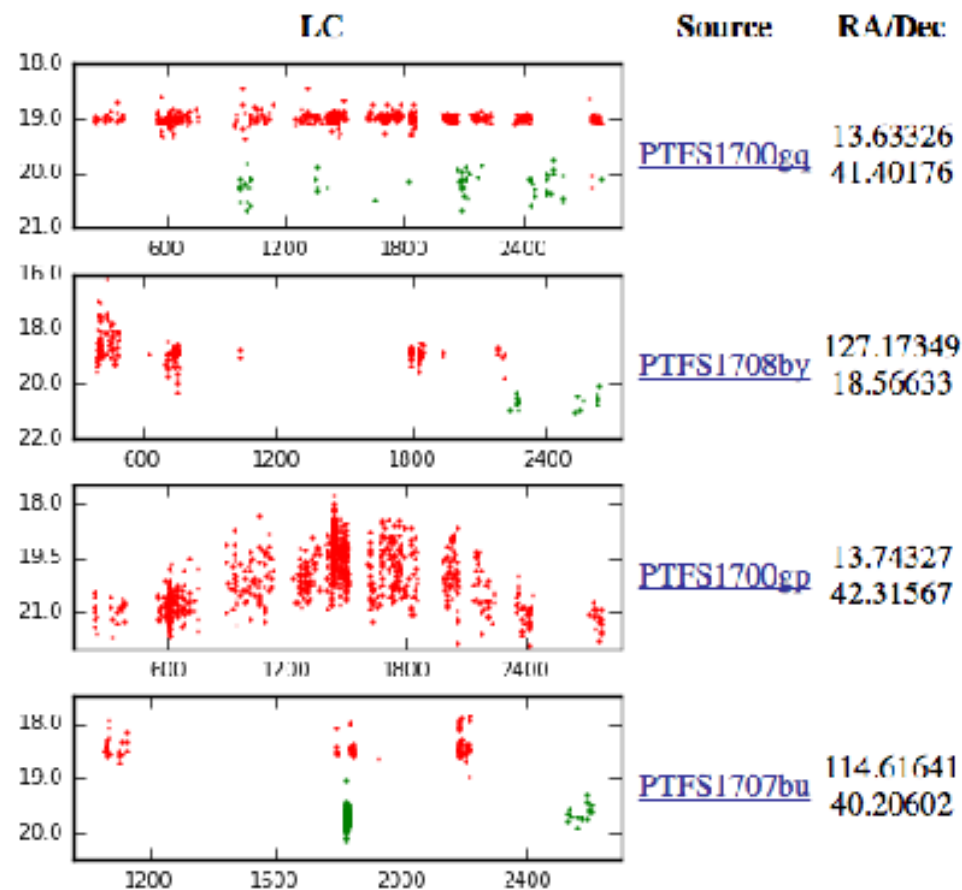
[<- Prev](#)

July 2017

[Next ->](#)

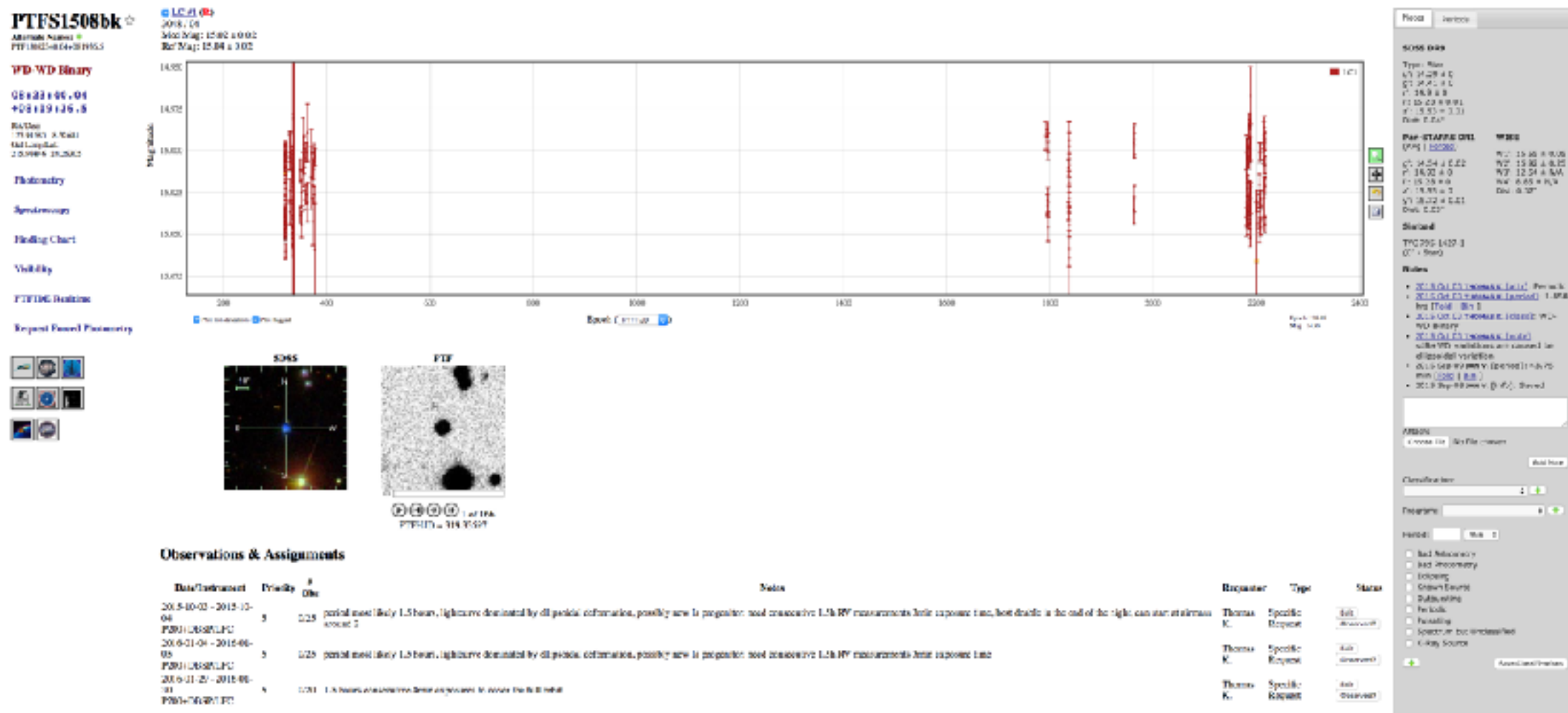
- [P200+DBSP \(2017-06-29 - 2017-07-01\)](#) - PTF Galactic Classification - Kulkarni
- [KeckI+LRIS \(2017-07-21 - 2017-07-22\)](#) - PTF Galactic Classification - Prince

## Latest Saved Sources



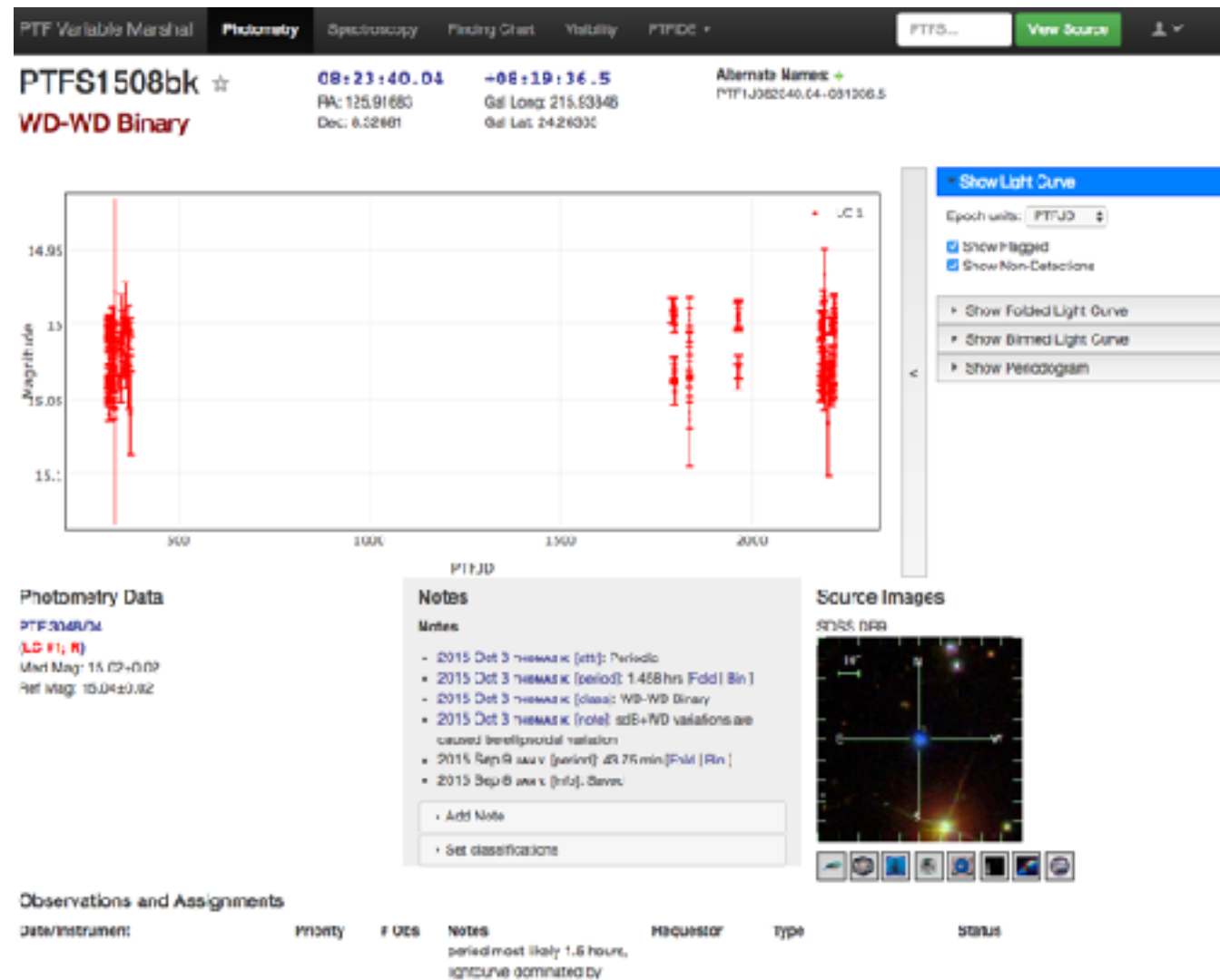
- Copy the iPTF/PTF Archival Marshal as the ZTF Archival Marshal
- Select objects by RA/Dec

# Source page



- Allows for a quick look at the data
- Some tools are available e.g.
  - Commenting, simple lomb-scargle
  - PanSTARRS, SDSS, WISE colors
  - Links to other catalogs

# Long term plans



- A more sophisticated period finding algorithm which automatically finds the best period and allows to fold the data
- an URL link to download the lightcurve (instead of having to click a button)
- show ZTF, PTF and CRTS lightcurves all in the same window
- show object in a color-color diagram e.g.:
  - u-g vs. g-r
  - proper motion vs. color
- show all available measurements for the object as function of wavelength (Galex, SDSS, PS, 2MASS, WISE, PTF-Halpha?)
  - > Spectral Energy Distribution