

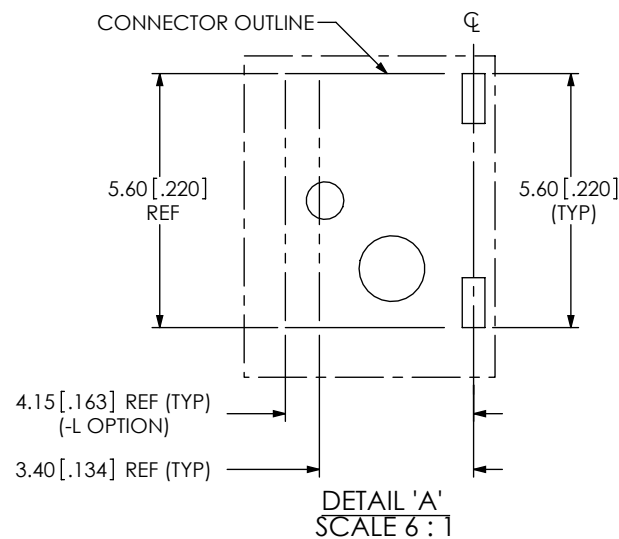
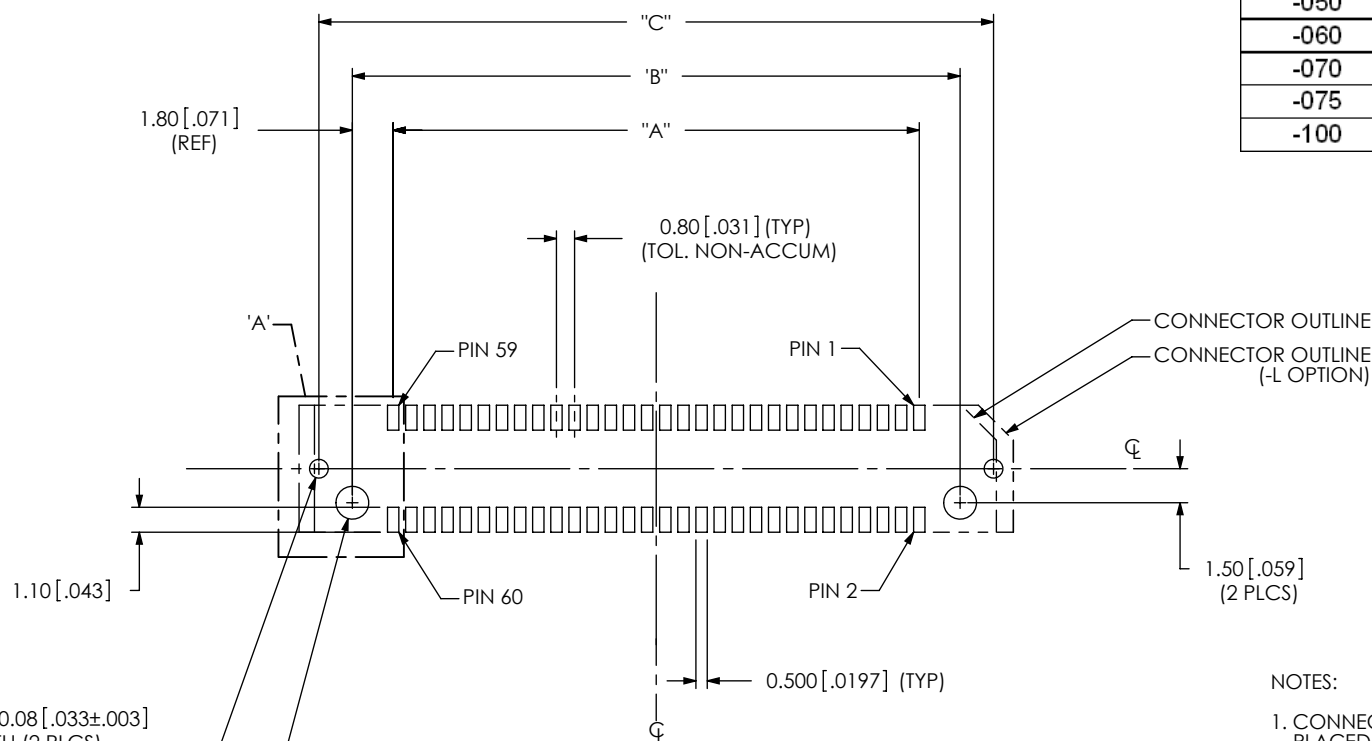
DESIGNED & DIMENSIONED  
IN MILLIMETERS[INCHES]

TABLE 1			
POSITION	"A"	"B"	"C"
-005	3.20 [.126]	6.80 [.268]	9.80 [.386]
-010	7.20 [.283]	10.80 [.425]	13.80 [.543]
-011	8.00 [.315]	11.60 [.457]	14.60 [.575]
-013	9.60 [.378]	13.20 [.520]	16.20 [.638]
-020	15.20 [.598]	18.80 [.740]	21.80 [.858]
-023	17.60 [.693]	21.20 [.835]	24.20 [.953]
-025	19.20 [.756]	22.80 [.898]	25.80 [1.016]
-030	23.20 [.913]	26.80 [1.055]	29.80 [1.173]
-035	27.20 [1.071]	30.80 [1.213]	33.80 [1.331]
-040	31.20 [1.228]	34.80 [1.370]	37.80 [1.488]
-049	38.40 [1.512]	42.00 [1.654]	45.00 [1.772]
-050	39.20 [1.543]	42.80 [1.685]	45.80 [1.803]
-060	47.20 [1.858]	50.80 [2.000]	53.80 [2.118]
-070	55.20 [2.173]	58.80 [2.315]	61.80 [2.433]
-075	59.20 [2.331]	62.80 [2.472]	65.80 [2.591]
-100	79.20 [3.118]	82.80 [3.260]	85.80 [3.378]



## NOTES:

- CONNECTOR ENVELOPE DIMENSIONS. OTHER COMPONENTS PLACED ON PCB SHALL AVOID THIS ZONE.

**K**

Ø 0.83±0.08 [.033±.003]  
PTH (2 PLCS)  
(-L OPTION ONLY)  
TO BE SOLDERED USING  
PASTE-IN-HOLE TECHNOLOGY

Ø 1.45±0.08 [.057±.003]  
NPTH (2 PLCS)

FIG. 1  
ALL OPTIONS EXCEPT - EGPS  
(-030 POSITION SHOWN)  
(ALL DIMENSIONS ARE SYMMETRIC ABOUT THE CENTERLINE)

F:\DWG\MISC\mktg\FOOTPRINT\ERF8-XXX-XX.X-X-DV-XXXX-TR-FOOTPRINT.SLDDRW

## PROPRIETARY NOTE

THIS DOCUMENT CONTAINS INFORMATION  
CONFIDENTIAL AND PROPRIETARY TO  
SAMTEC, INC. AND SHALL NOT BE REPRODUCED  
OR TRANSFERRED TO OTHER DOCUMENTS OR  
DISCLOSED TO OTHERS OR USED FOR ANY  
PURPOSE OTHER THAN THAT WHICH IT WAS  
OBTAINED WITHOUT THE EXPRESSED WRITTEN  
CONSENT OF SAMTEC, INC.

**samtec**

520 PARK EAST BLVD, NEW ALBANY, IN 47150  
PHONE: 812-944-6733 FAX: 812-948-5047  
e-Mail: info@SAMTEC.com code: 55322

NOTE:  
STENCIL TO BE 0.15[.006] THICK.

DESIGNED & DIMENSIONED  
IN MILLIMETERS[INCHES]

TABLE 2		
POSITION	"A"	"B"
-005	3.20 [.126]	9.80 [.386]
-010	7.20 [.283]	13.80 [.543]
-011	8.00 [.315]	14.60 [.575]
-013	9.60 [.378]	16.20 [.638]
-020	15.20 [.598]	21.80 [.858]
-023	17.60 [.693]	24.20 [.953]
-025	19.20 [.756]	25.80 [1.016]
-030	23.20 [.913]	29.80 [1.173]
-035	27.20 [1.071]	33.80 [1.213]
-040	31.20 [1.228]	37.80 [1.488]
-049	38.40 [1.512]	45.00 [1.772]
-050	39.20 [1.543]	45.80 [1.803]
-060	47.20 [1.858]	53.80 [2.118]
-070	55.20 [2.173]	61.80 [2.433]
-075	59.20 [2.331]	65.80 [2.591]
-100	79.20 [3.118]	85.80 [3.378]

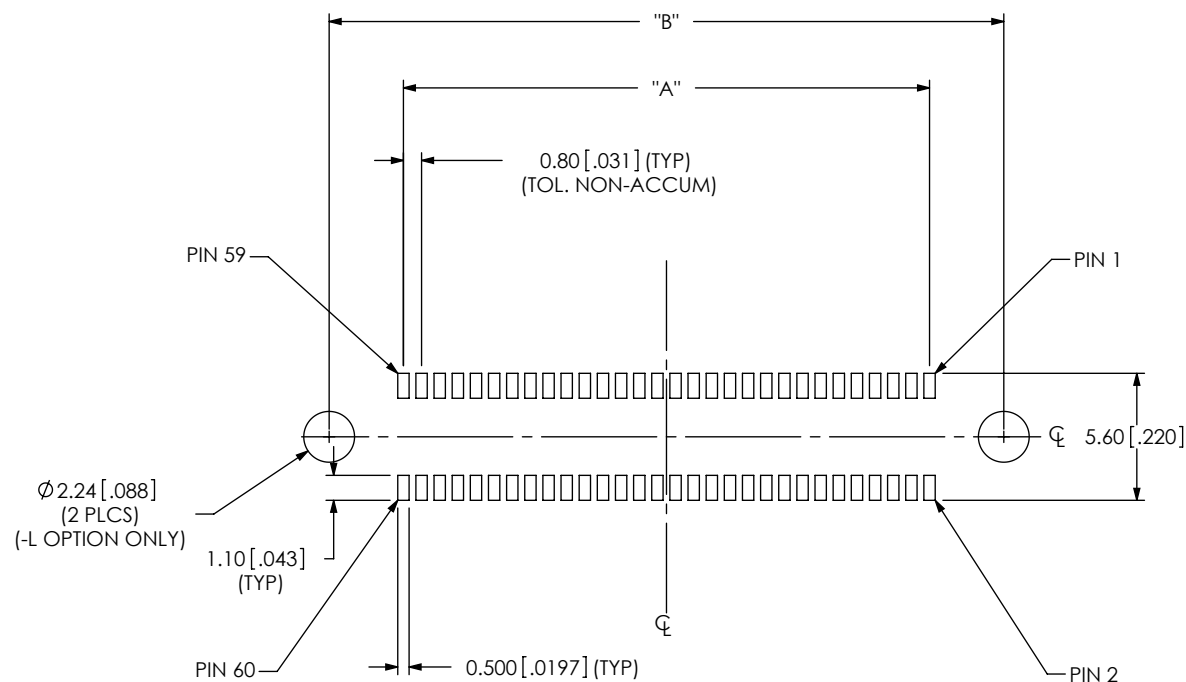


FIG. 2  
(-030 POSITION SHOWN)  
(ALL DIMENSIONS ARE SYMMETRIC ABOUT THE CENTERLINE)

PROPRIETARY NOTE

THIS DOCUMENT CONTAINS INFORMATION  
CONFIDENTIAL AND PROPRIETARY TO  
SAMTEC, INC. AND SHALL NOT BE REPRODUCED  
OR TRANSFERRED TO OTHER DOCUMENTS OR  
DISCLOSED TO OTHERS OR USED FOR ANY  
PURPOSE OTHER THAN THAT WHICH IT WAS  
OBTAINED WITHOUT THE EXPRESSED WRITTEN  
CONSENT OF SAMTEC, INC.

**samtec**

520 PARK EAST BLVD, NEW ALBANY, IN 47150  
PHONE: 812-944-6733 FAX: 812-948-5047  
e-Mail: info@SAMTEC.com code: 55322

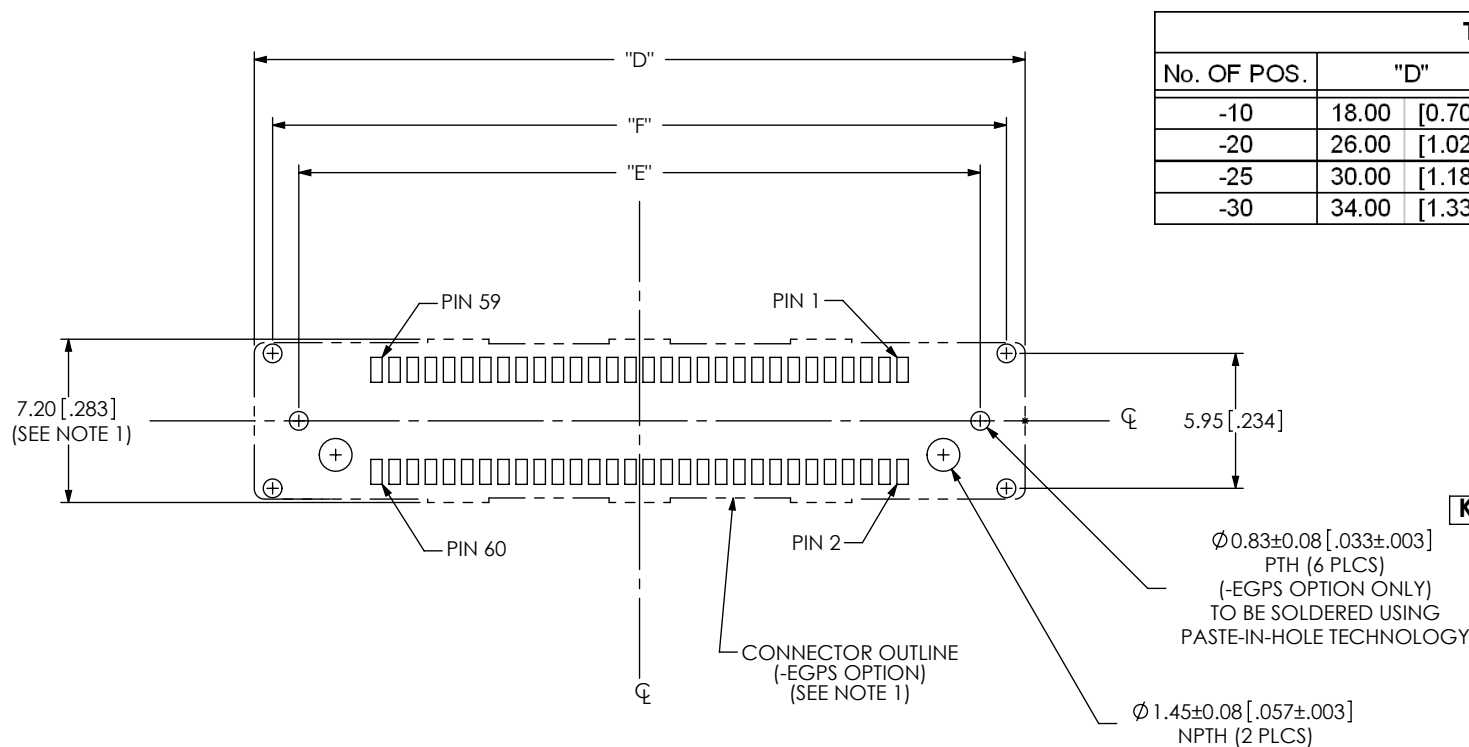


TABLE 3						
No. OF POS.	"D"		"E"		"F"	
-10	18.00	[0.709]	14.00	[0.551]	16.36	[0.644]
-20	26.00	[1.024]	22.00	[0.866]	24.36	[0.959]
-25	30.00	[1.181]	26.00	[1.024]	28.36	[1.117]
-30	34.00	[1.339]	30.00	[1.181]	32.36	[1.274]

## PROPRIETARY NOTE

THIS DOCUMENT CONTAINS INFORMATION  
CONFIDENTIAL AND PROPRIETARY TO  
SAMTEC, INC. AND SHALL NOT BE REPRODUCED  
OR TRANSFERRED TO OTHER DOCUMENTS OR  
DISCLOSED TO OTHERS OR USED FOR ANY  
PURPOSE OTHER THAN THAT WHICH IT WAS  
OBTAINED WITHOUT THE EXPRESSED WRITTEN  
CONSENT OF SAMTEC, INC.

**samtec**

520 PARK EAST BLVD, NEW ALBANY, IN 47150  
PHONE: 812-944-6733 FAX: 812-948-5047  
e-Mail: info@SAMTEC.com code: 55322

NOTE:  
STENCIL TO BE 0.15[.006] THICK.

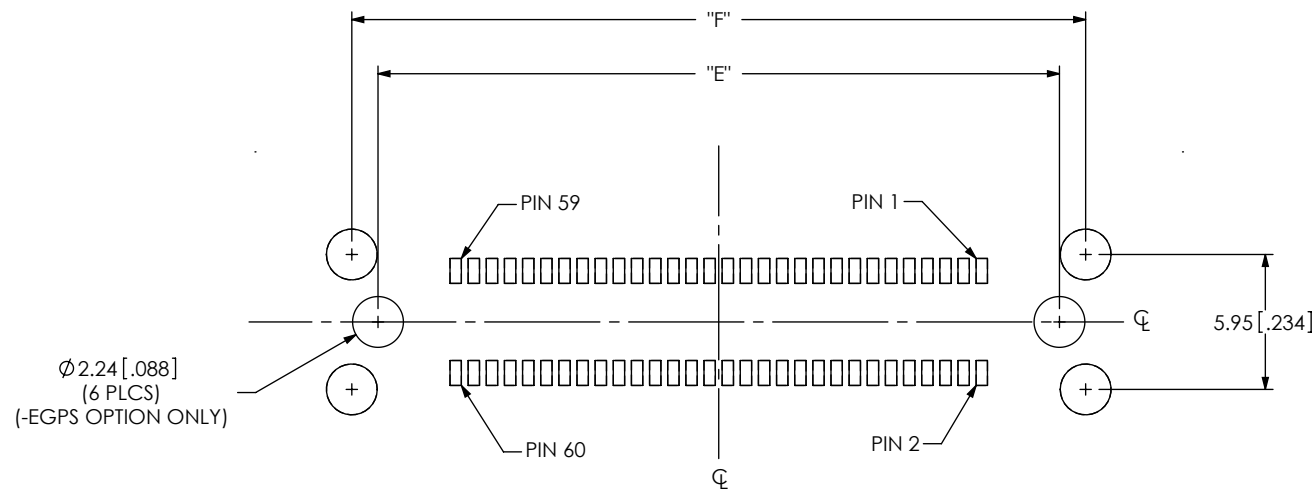


FIG. 4  
-EGPS OPTION  
(-030 POSITION SHOWN)  
(SAME AS FIG.2, EXCEPT AS SHOWN)  
(ALL DIMENSIONS ARE SYMMETRIC ABOUT THE CENTERLINE)

PROPRIETARY NOTE

THIS DOCUMENT CONTAINS INFORMATION  
CONFIDENTIAL AND PROPRIETARY TO  
SAMTEC, INC. AND SHALL NOT BE REPRODUCED  
OR TRANSFERRED TO OTHER DOCUMENTS OR  
DISCLOSED TO OTHERS OR USED FOR ANY  
PURPOSE OTHER THAN THAT WHICH IT WAS  
OBTAINED WITHOUT THE EXPRESSED WRITTEN  
CONSENT OF SAMTEC, INC.

**samtec**

520 PARK EAST BLVD, NEW ALBANY, IN 47150  
PHONE: 812-944-6733 FAX: 812-948-5047  
e-Mail: info@SAMTEC.com code: 55322