

Figure 1: A wide-field (5 arcmin) 2MASS image of the target field. The suggested guide star is one of the bright stars in the core, but it is not apparent in this image due to crowding. This is just intended to give you a rough idea of where the target is on the sky; see subsequent figures for higher-resolution finding charts.

I've included three finding charts representing three different levels of magnification. Since there are objects with a range of brightnesses in the field, I suggest observations with the minimum exposure time (1.5s) and a longer integration time (15s) in J , H , and K_s .

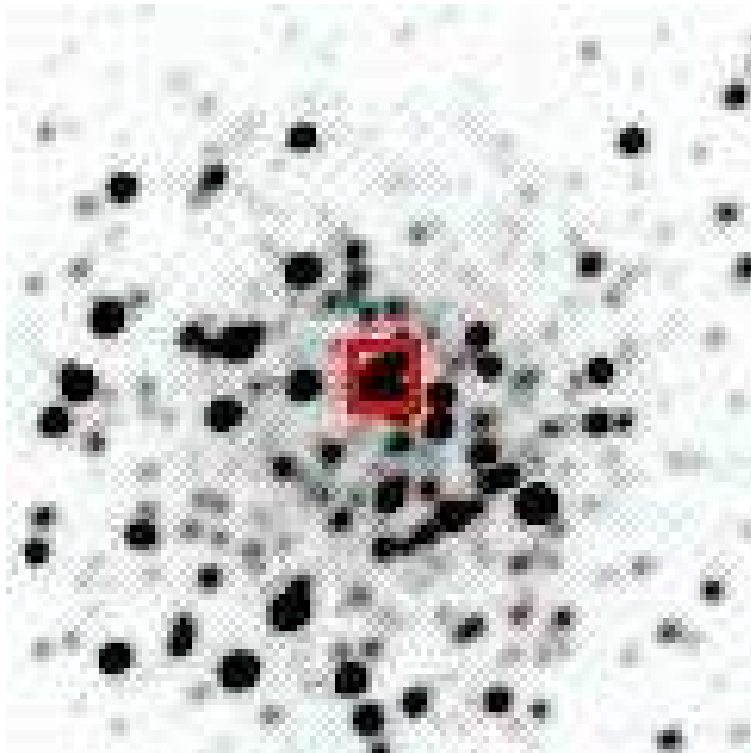


Figure 2: A narrower-field (2 arcmin) 2MASS image of the target field. The image has been stretched to show only the bright giants; the suggested guide star is part of a four-star asterism inside the red box.

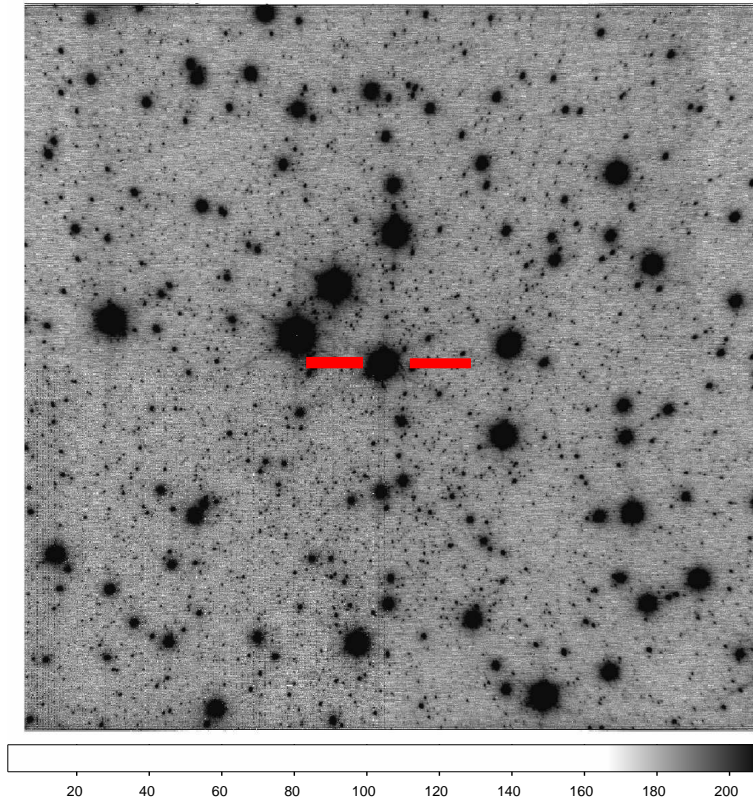


Figure 3: A high-resolution (40 arcsec) image of the target field taking with NGS-AO at Keck. The suggested guide star is part of the four-star asterism (a right triangle) in the middle of the image, and is denoted with red crosshairs on either side.