

DRAWING NUMBER	SH	REV
740-C0055	1	F

DO NOT SCALE DRAWING

REV	DATE	DESCRIPTION	ZONE	ECN	APPROVED
		SEE SHT #5 FOR REVISIONS.			

A

A

B

B

C

C

D

D

INSTRUMENT  
CENTER POSITION  
ENVELOPE  
(NLT1)

LEFT NASMYTH  
PLATFORM

LADDER

PLATFORM EXTENSION

ELECTRONICS ROOM

LASER

OBS

DM

IF Anc

COMMS  
INTERFACE/  
WYKO PC

WFS

K2  
CABLE  
WRAP  
AREA

NIRC-2

CLEAN ROOM

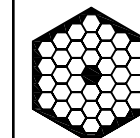
FRONT

KECK 2  
CENTER OF TELESCOPE

5	1	NIRC-2 FINAL ASS'Y	0082
4	1	K2 A0 ENCLOSURE ROOF RAILING ASS'Y	1300-C0400
3	1	CONNECTOR PANEL CHASSIS ASS'Y INSTALLATION NLT1, K2	740-C1400
		A0 ENCLOSURE W/ DIMENSIONS	1300-C0001
2	1	A0 ENCLOSURE	1300-C0001
1	1	A0 BENCH SYSTEM	1300-C0800
ITEM	QTY	DESCRIPTION	PARTS NUMBER

PARTS LIST

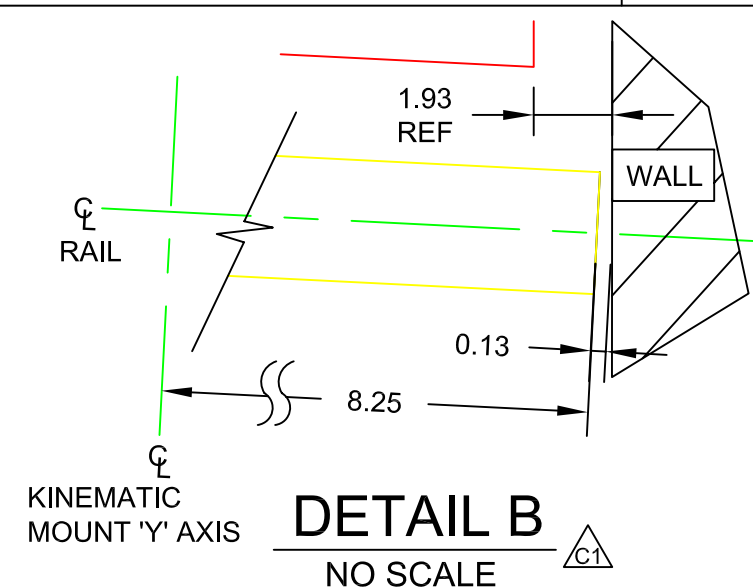
APPROVALS		DATE	PROTECTIVE FINISH:	MATERIAL & SPECIFICATION:	TOLERANCES UNLESS OTHERWISE SPECIFIED:
DRAWN		WR	6/07/01	N/A	DECIMAL
CHECKED		KK	6/08/01	TREATMENT: N/A	0.X = ± .1
ENGR		KK	6/08/01	THIRD ANGLE PROJECTION	0.XX = ± .04
NEXT ASSY		DESIGN ACTIVITY			0.XXX = ± .004
DIMENSIONS IN INCHES UNLESS OTHERWISE STATED					SHEET 1 OF 5
DO NOT SCALE DRAWING					SCALE 3/8" = 1'-0"



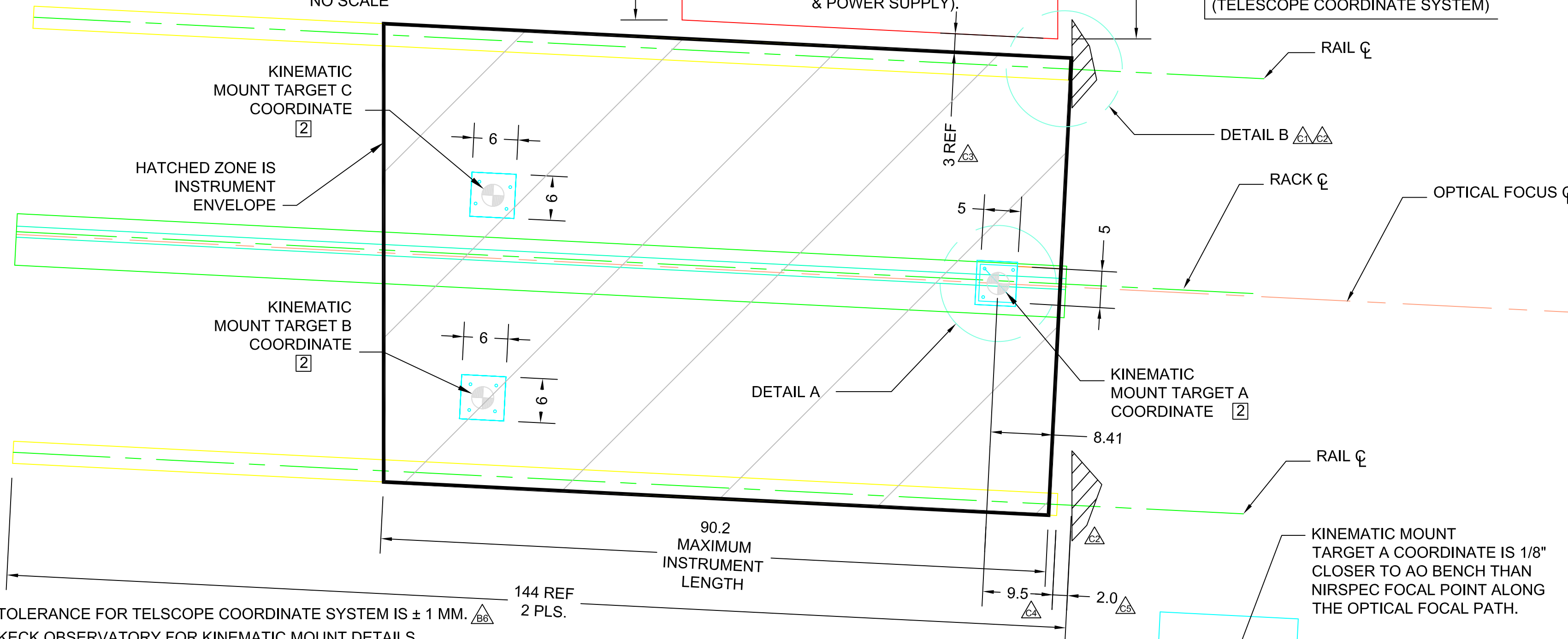
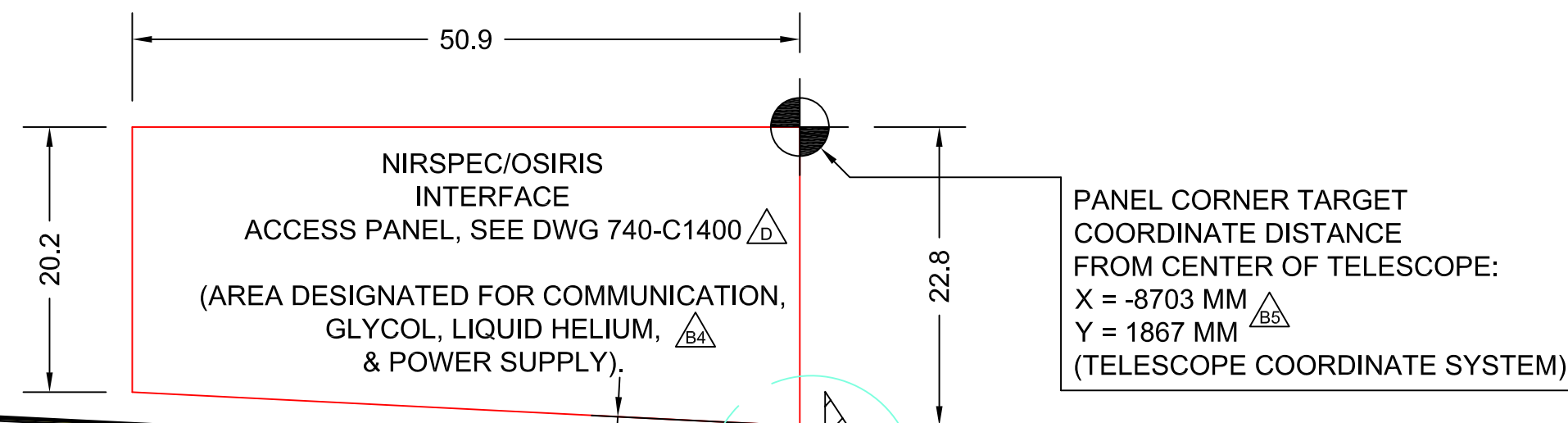
**W. M. KECK OBSERVATORY**  
CALIFORNIA ASSOCIATION FOR RESEARCH IN ASTRONOMY

TITLE		DRAWING NUMBER	REV
KECK 2 LEFT NASMYTH PLATFORM INSTRUMENT INTERFACE CONTROL DWG - CENTER POSITION		740-C0055	F

DRAWING NUMBER	SH	REV
740-C0055	2	F



DO NOT SCALE DRAWING



6] GENERAL TOLERANCE FOR TELESCOPE COORDINATE SYSTEM IS  $\pm 1$  MM. /E

5] CONTACT KECK OBSERVATORY FOR KINEMATIC MOUNT DETAILS.

4] TOP OF RAIL HEIGHT & TOLERANCE IS BASED ON 4/17/01 SURVEY OF KECK 2 RIGHT NASMYTH PLATFORM RAILS. SEE REFERENCE DWG. 1070-C0002 REV A SHT 1. THE DESIGN VALUE FOR TOP OF RAIL IS 3.06 IN.

3] VIEW A-A IS LOOKING TOWARD TELESCOPE CENTER ON THE LEFT NASMYTH PLATFORM.





2] THE TELESCOPE COORDINATE VALUES SHOWN IN THIS NOTE ARE GIVEN IN MILLIMETERS AND REFERENCE TO THE TELESCOPE OPTIC AXIS

KINEMATIC MOUNT TARGET COORDINATE	TELESCOPE COORDINATE SYSTEM		
	X (MM)	Y (MM)	Z (MM)
A	-8909	446	-1576
B	-10683	52	-1576
C	-10648	750	-1576

**1 WEIGHT LIMITATIONS:**  
 MAXIMUM INSTRUMENT WEIGHT: 2000 LBS.  
 MAXIMUM CART WEIGHT: 1000 LBS.

NOTES:

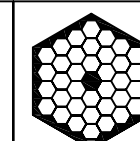
### PLAN VIEW OF KECK II LEFT NASMYTH PLATFORM

	APPROVALS		DATE	PROTECTIVE FINISH:	MATERIAL & SPECIFICATION:	TOLERANCES UNLESS OTHERWISE SPECIFIED		 <b>W. M. KECK OBSERVATORY</b> CALIFORNIA ASSOCIATION FOR RESEARCH IN ASTRONOMY	TITLE	KECK 2 LEFT NASMYTH PLATFORM INSTRUMENT INTERFACE CONTROL DWG - CENTER POSITION	DRAWING NUMBER	REV
	DRAWN	WR	6/07/01	N/A		$\triangle_{B3}$ DECIMAL ANGLES $X = \pm .1$ $0.X = \pm .1$ $0.XX = \pm .04$ $0.XXX = \pm .004$						
	CHECKED	KK	6/08/01	TREATMENT: N/A	THIRD ANGLE PROJECTION 							
640-C0012	ENGR	KK	6/08/01	DIMENSIONS IN INCHES UNLESS OTHERWISE STATED DO NOT SCALE DRAWING		SHEET 2 OF 5  SIZE C						
NEXT ASSY	DESIGN ACTIVITY					SCALE 1" = 1'-0" 						

DETAIL A

---

NO SCALE



W. M. KECK OBSERVATORY  
CALIFORNIA ASSOCIATION FOR RESEARCH IN ASTRONOMY

KECK 2 LEFT NASMYTH PLATFORM INSTRUMENT  
INTERFACE CONTROL DWG – CENTER POSITION

DRAWING NUMBER	REV
740-C0055	F

DRAWING NUMBER	SH	REV
740-C0055	3	F

DO NOT SCALE DRAWING

F

62.1  
MAXIMUM  
INSTRUMENT WIDTH

31.05

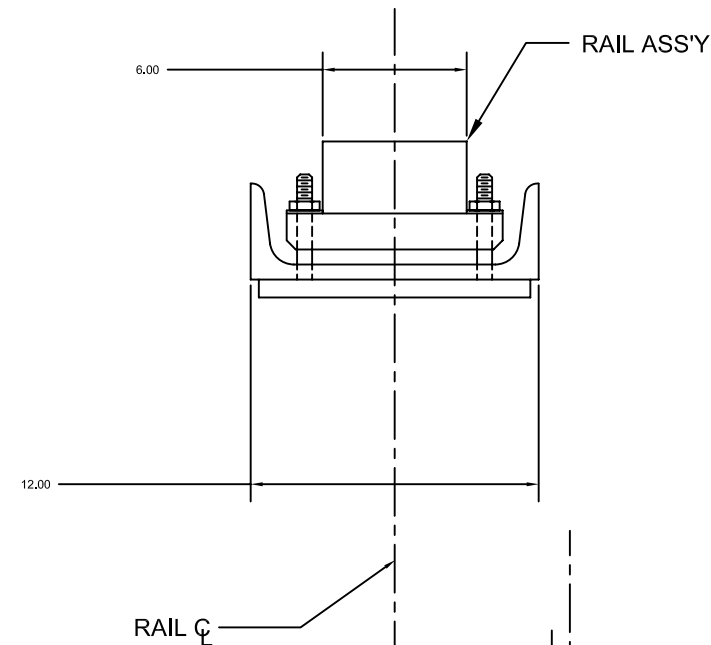
HATCHED ZONE IS  
INSTRUMENT ENVELOPE

110  $\Delta$ <sub>B1</sub>  
MAXIMUM  
HEIGHT  
FOR DEWAR  
REMOVAL

80  
MAXIMUM  
HEIGHT  
FOR  
INSTRUMENT  
& CART

NIRC2 OPTICAL PATH

NIRSPEC & DSM OPTICAL PATH

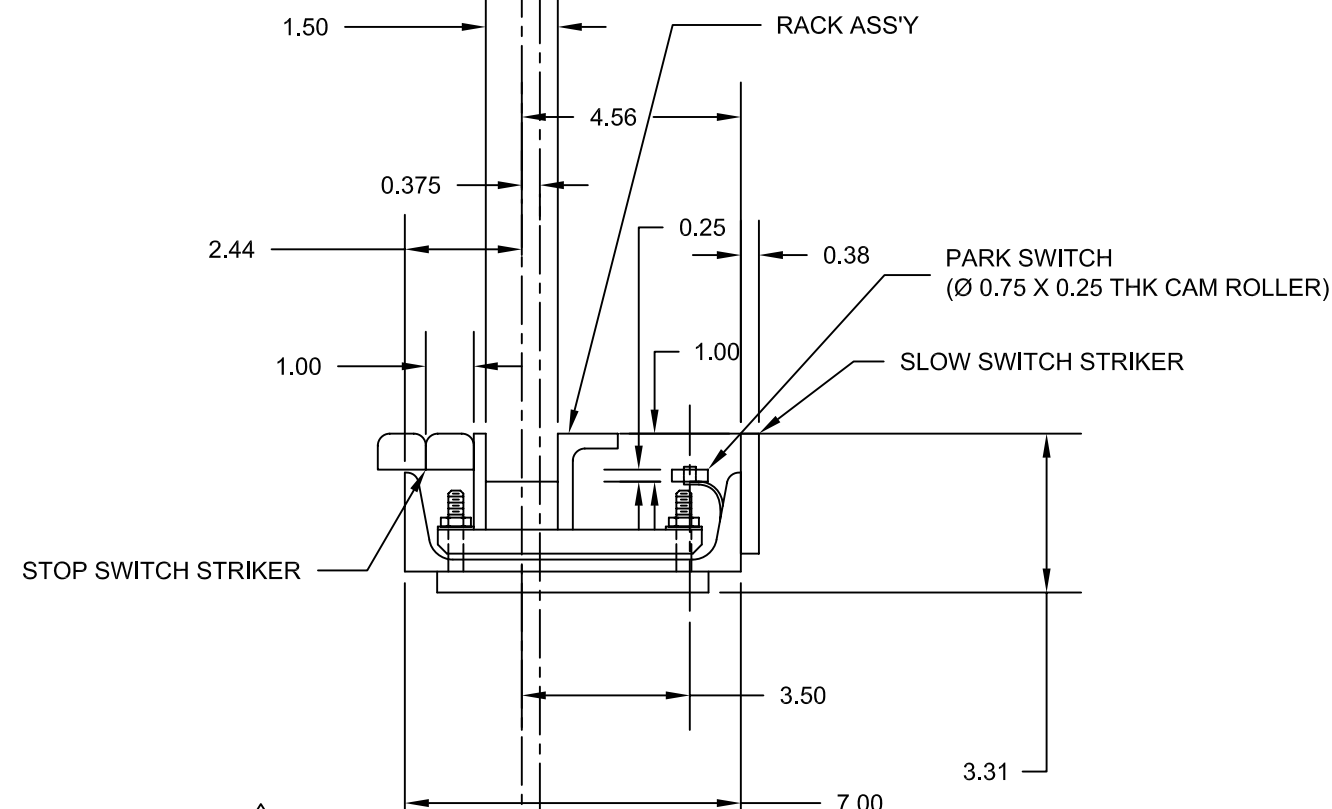


DETAIL A  
SCALE: 1:4

62.055

4.5  $\Delta$ <sub>B2</sub>  
INSTRUMENT  
BASE  
OFFSET

ELEVATION (-1576 MM)  $\Delta$ <sub>B5</sub>  
TELESCOPE COORDINATE SYSTEM



DETAIL B  
SCALE: 1:4

DETAIL A

DETAIL B

RAIL C

RACK C

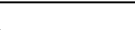


OPTICAL C

RAIL C

$\Delta$  3.25 $\pm$ 0.16 [82.6 $\pm$ 4.00]  
SEE NOTE 4

RACK & RAIL END VIEW A-A

E

	APPROVALS		DATE	PROTECTIVE FINISH:	MATERIAL & SPECIFICATION:	TOLERANCES UNLESS OTHERWISE SPECIFIED:			<b>W. M. KECK OBSERVATORY</b> CALIFORNIA ASSOCIATION FOR RESEARCH IN ASTRONOMY			
	DRAWN	WR	6/07/01	N/A		DECIMAL X = ± .1 0.X = ± .1 0.XX = ± .04 0.XXX = ± .004						
	CHECKED	KK	6/08/01	TREATMENT: N/A	THIRD ANGLE PROJECTION 							
640-C0012	ENGR	KK	6/08/01			SHEET 3 OF 5 						
NEXT ASSY	DESIGN ACTIVITY			DIMENSIONS IN INCHES UNLESS OTHERWISE STATED DO NOT SCALE DRAWING		SCALE 1 : 8		C	TITLE KECK 2 LEFT NASMYTH PLATFORM INSTRUMENT INTERFACE CONTROL DWG – CENTER POSITION		DRAWING NUMBER 740-C0055	REV F

1

2

3

4

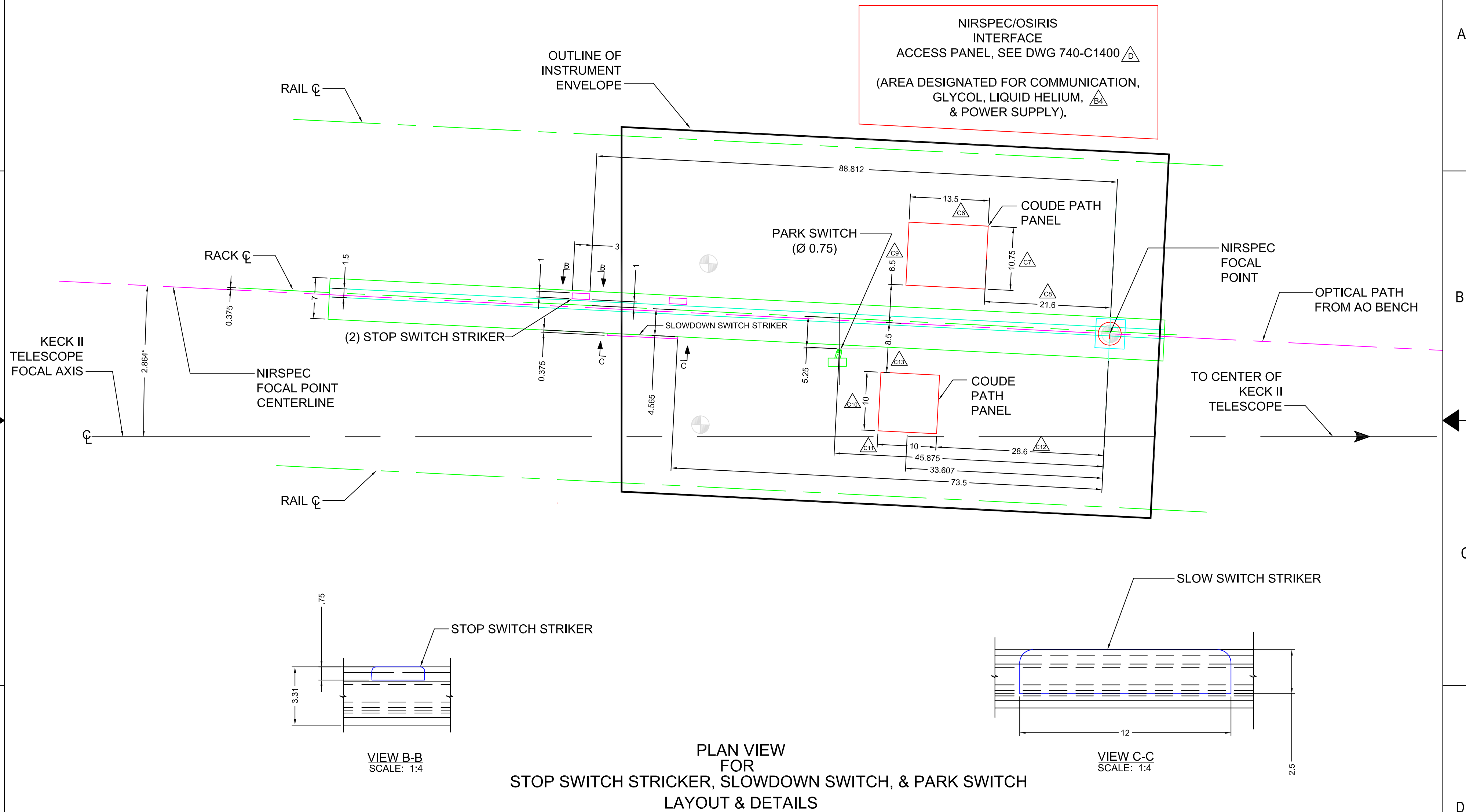
5

6

DRAWING NUMBER	SH	REV
740-C0055	4	F

DO NOT SCALE DRAWING

F



APPROVALS	DATE	PROTECTIVE FINISH:	MATERIAL & SPECIFICATION:	TOLERANCES UNLESS OTHERWISE SPECIFIED:	SHEET 4 OF 5	SIZE C	TITLE	DRAWING NUMBER	REV
DRAWN	WR	6/07/01	N/A				W. M. KECK OBSERVATORY CALIFORNIA ASSOCIATION FOR RESEARCH IN ASTRONOMY	740-C0055	F
CHECKED	KK	6/08/01	TREATMENT: N/A	THIRD ANGLE PROJECTION					
640-C0012	ENGR	KK	6/08/01				KECK 2 LEFT NASMYTH PLATFORM INSTRUMENT INTERFACE CONTROL DWG - CENTER POSITION	740-C0055	F
NEXT ASSY	DESIGN ACTIVITY								

1

2

3

4

5

6

DRAWING NUMBER

SH

REV

740-C0055

5

F

DO NOT SCALE DRAWING

C14

REV

DATE

DESCRIPTION

ZONE

ECN

APPROVED

A

6/12/01

CHANGED DIM 3.25 CALLOUT ON SHEET 2

D3, D4

90875

KK

B

6/26/01

1. ADDED 110" MAX. HGT. FOR DEWAR REMOVAL. - SHT 2  
2. INCREASED INSTRUMENT BASE OFFSET FROM 4 TO 4.5. - SHT 2  
3. REVISED GEN. TOLERANCE FROM .01 TO .04 & .001 TO .004. - SHT 1, 2, 3  
4. ADDED DESIGNATED AREA FOR COMM., GLYCOL, LIQ. HE, POWER SUPPLY. - SHT 1  
5. ROUNDED MM COORDINATES TO WHOLE NUMBERS. - SHT 1  
6. ADDED NOTE #6. - SHT 1

SHT 2: A1  
SHT 2: C4  
D4  
SHT1/A4;SHT3/A4  
SHT1/A5,D4,A2;SHT2/D4  
SHT 1: C1

90897

KK

C

8/14/03

1. ADDED DETAIL B INCL. 1.93 REF OFFSET FROM ACCESS PANEL TO WALL.  
ADDED 0.13 OFFSET FROM END OF RAIL TO WALL.  
ADDED 8.25 OFFSET FROM KINEMATIC MOUNT 'Y' AXIS TO END OF RAIL.  
2. ADDED WALL FEATURE AT END OF RAILS.  
3. DIM 3 REF WAS 2.5 REF.  
4. ADDED DIM 9.5, OFFSET FROM KM TO END OF RAIL.  
5. ADDED DIM 2.0, OFFSET FROM END OF RAIL TO WALL.  
6. ADDED DIM 13.5, COUDE PATH PANEL LENGTH.  
7. ADDED DIM 10.75, COUDE PATH PANEL WIDTH.  
8. ADDED DIM 21.6, COUDE PATH PANEL OFFSET FROM KM 'Y' AXIS.  
9. ADDED DIM 6.5, COUDE PATH PANEL OFFSET FROM KM 'X' AXIS.  
10. ADDED DIM 10, COUDE PATH PANEL LENGTH.  
11. DIM 10 WAS 35.489 FOR COUDE PATH PANEL WIDTH.  
12. DIM 28.6 WAS 58.139 FOR COUDE PATH PANEL OFFSET FROM KM 'Y' AXIS.  
13. ADDED DIM 8.5, COUDE PATH PANEL OFFSET FROM KM 'X' AXIS.  
14. ADDED SHEET # 4 AND MOVED REVISION BLOCK FOR DWG TO THIS SHEET.

SHT1: A2  
  
SHT1: A4/C4  
SHT1: B4  
SHT1: C4  
SHT1: C4  
SHT3: B4  
SHT3: B5  
SHT3: B5  
SHT3: B4  
SHT3: B4  
SHT3: C4  
SHT3: C5  
SHT3: B4  
SHT4

91030

JV

D

11/19/04

1. CHG NOTE NIRSPEC/OSIRIS...SEE DWG 740-C1400 WAS NIRSPEC...

SHT1: A4  
SHT3: A4/A5

91027

J MEGURO

E

12/03/04

ADDED NEW SHEET FOR FACILITY LAYOUT OF LEFT NAS. PLAT., CREATING NEW SHT1;  
SHT 2 WAS SHT 1; SHT 3 WAS SHT 2; SHT 4 WAS SHT 3; SHT 5 WAS SHT 4  
SHT 2 SCALE 1" = 1'-0" WAS 1' = 1'-0"; SHT 5 SCALE NO SCALE WAS 1" -1' 0"  
ALL SHTS: CREATED 640-C0012 AS NEXT ASS'Y

SHTS 2,3,4,5,: D3, D4

F

4/27/07

ELECTRONICS ROOM 'COMMS INTERFACE/ WYKO PC WAS DM, DM WAS WFS AND WFS WAS NIRC-2'. REVISION BLOCKS WERE REMOVED FROM INDIVIDUAL SHEETS TO SHT 5 ONLY.

90975

D MEDEIROS

APPROVALS

DATE

DRAWN

WR

6/07/01

CHECKED

KK

6/08/01

640-C0012

ENGR

KK

6/08/01

NEXT ASSY

DESIGN ACTIVITY

PROTECTIVE FINISH:

N/A

TREATMENT:

N/A

DIMENSIONS IN INCHES UNLESS OTHERWISE STATED

DO NOT SCALE DRAWING

MATERIAL & SPECIFICATION:

THIRD ANGLE PROJECTION

TOLERANCES UNLESS OTHERWISE SPECIFIED:

DECIMAL  
X= ± .1  
0.X= ± .04  
0.XX= ± .04  
0.XXX= ± .004

ANGLES  
0.X = ± .1

SHEET 5 OF 5

SCALE: NO SCALE

W. M. KECK OBSERVATORY

CALIFORNIA ASSOCIATION FOR RESEARCH IN ASTRONOMY

KECK 2 LEFT NASMYTH PLATFORM INSTRUMENT

INTERFACE CONTROL DWG - CENTER POSITION

DRAWING NUMBER

740-C0055

REV

F

1

2

3

4

5

6