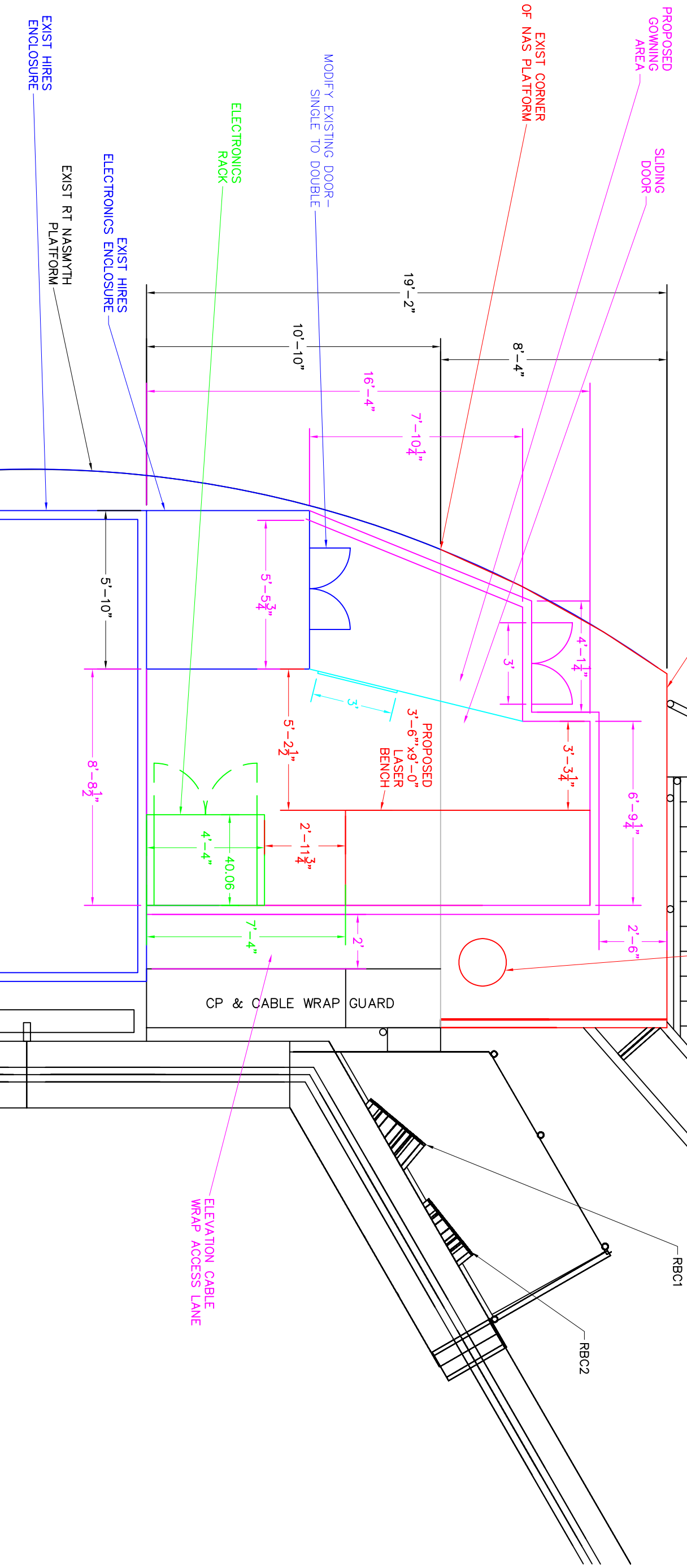


EXTEND PLATFORM 8' 4" AND ADD RAILINGS. EXTENSION SHALL HAVE LOAD RATING EQUAL TO OR GRATER THAN THE EXISTING RT NAS PLATFORM.

REMOVE AND REATTACH EXIST MIRROR CELL ACCESS STAIRWAY TO NAS PLATFORM EXTENSION. A WALKWAY FROM THE BOTTOM OF THE DRIVE PLATFORM WILL NEED TO BE DESIGNED, FABRICATED AND INSTALLED.

PROPOSED HIRES & NIRES DEWAR



**RT NAS LAYOUT OPTION 5:
PLATFORM EXTENDED 8'-4"**

THIS DRAWING IS FOR PLANNING ONLY. THIS PROPOSAL HAS NOT BEEN APPROVED.

REV / DESCRIPTION		REVISION HISTORY			
REV	DESCRIPTION	DATE	ECN	INITIAL	INITIAL

ORIGINATORS	ENGINEERING	FINISH	TOLERANCES	DIMENSIONS IN	TITLE
D. MEDEIROS	04/18/06	UNLESS OTHERWISE SPECIFIED	3RD ANGLE PROJECTION	INCH	W. M. KECK OBSERVATORY CALIFORNIA ASSOCIATION FOR RESEARCH IN ASTRONOMY 85-1120 MAUNULAHOA HWY. KAMIELE, HI 96743
APPROVALS	ENGINEER APPROVAL	DECIMAL	SCALE		LAYOUT OPTIONS, LGS, RT NAS, KECK 1
	DOC APPROVAL	ANGULAR	NONE	6 OF 6	1710-C0002
NEXT ASSY		X ± .25 XX ± .25 XXX ± .25 X ± 1°			