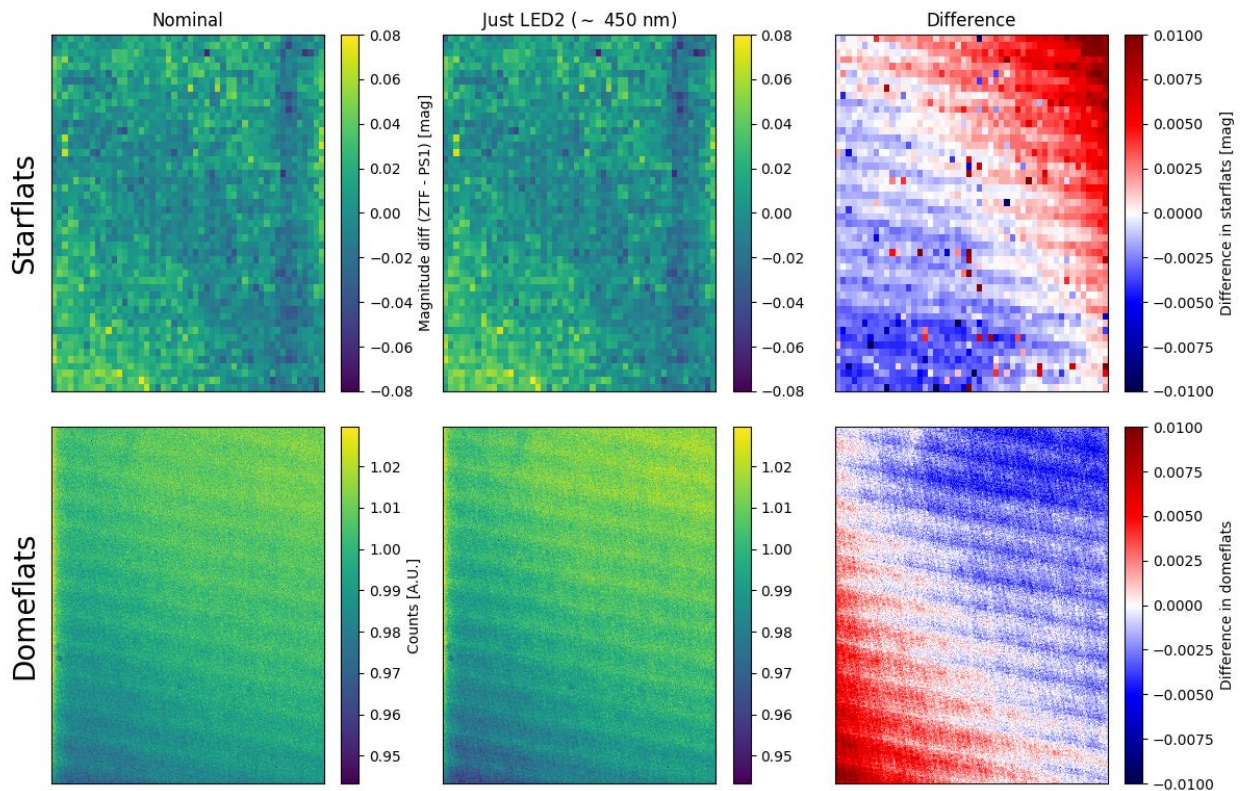


If the newsletter does not look good in your email, check the pdf [here!](#)

**News from DQA (Matteo):**

“We have finally fixed the last technical difficulties in running a reduced IPAC pipeline in the sandbox environment (via [ztftoolbox](#)). The results are in perfect agreement with the official IPAC pipeline products. With all the pieces in place and ship shape, we have just started playing with the color content of the domeflats and inspecting the effect it has on the starflats. An example is demonstrated in the attached figure, where the 'official' IPAC domeflats, and the resulting starflats are compared with those obtained using just one of the LEDs to calibrate the images. While investigating these images we have started a grid sampling of the 3D LED color space of the g-band to see if there is a color combination that reduce the radial component of the starflats.”



### **Helping out at AAS**

We have a splinter session at AAS on Tuesday Jan 8 from 11:00 - 12:30, the purpose of which is to introduce the community to the alert stream and how to work with it. If you are attending AAS, please let Matthew Graham know if you are able to assist.

### **News from working groups**

**Solar System:** "A relatively quiet week, we have a few streaks that we are unable to follow-up due to bad weather in Palomar, but we did find an interesting non-NEA, 2018 WQ1, which orbit crosses Mars and Jupiter orbit."

**AGNs and TDEs:** "The ZTFbh SWG has officially transitioned to auto-saving on the Marshal. While auto-saving directly from our AMPEL filter is still not working (there is an issue with the Marshal and candidate IDs), we are autosaving nuclear transients that both pass through our Marshal filter and have a cross match with the list of transients that passed our AMPEL filter. This means that all of our daily scanning duties will now go towards looking at the ranked TDE candidates list (courtesy of Sjoert) and triggering SEDM when appropriate, and assigning classifications based on SEDM and other follow-up when appropriate. We have a new TDE candidate, "SansaStark" (ZTF18abxftqm), and we are waiting for Swift observations, after which we plan on writing an ATel. Our XMM-Newton AO-17 proposal was approved for X-ray follow-up of ZTF TDEs...so we have another exciting year TDE discovery and follow-up ahead of us!"

**Machine Learning:**"The RB pipeline has been upgraded to have more stringent criteria for inclusion into the training set. We have also started the process of reviewing examples suspected of contamination and flipping labels. These changes resulted in a large reduction in the number of real labeled examples. However, despite having far fewer real training examples, we saw big improvements in performance, particularly on bogus examples. We have decided not deploy a new classifier since we anticipate the next set of changes will restore the number of reals and improve things unambiguously. These changes are to incorporate 1) training examples from the Zooniverse MSIP campaign and 2) light curve detections for spectroscopically-confirmed reals. "

**Galactic/M31:**"We continue our Galactic Plane survey. However, we have been pretty unlucky with the weather so far."

**The papers corner:** Please let us know one a paper has been accepted!

**Reminder: Mark your calendars, next team meeting is coming up:**

The Weizmann Institute is happy to invite everyone to the next ZTF collaboration meeting, which will be held at the Weizmann institute for Science in Rehovot, Israel - March 12-15, 2019.

Please have a look at the [meeting website here](#), and please begin registering (no costs involved) at your earliest convenience so that they can have a head count estimate ASAP.

**Reminder: IMPORTANT: We (still) need your help for the ZTF FAQs page! (and would love to remove this item from the newsletter)**

During several weeks, we have listed the questions that people across the collaboration would like to have in the [FAQs](#) page. Now it is time to add answers. Please help us fill the voids (and elaborate on the answers already there).

**More reminders:**

- Public Alerts: There is a [link](#) to the alerts archive on the [website](#)!
- Please help us keeping track of all the available softwares! A preliminary list is available on the [twiki](#). Let us know if you are building a software which you think could benefit (or be relevant to) a large portion of the collaboration.
- **ZTF general slack channel**: Please join through this [link](#)!
- If you want to get access to the **ZTF data** via the IRSA interface, please request data access to the communication coordinators: [ztf.communication.coordinators@gmail.com](mailto:ztf.communication.coordinators@gmail.com)
- **Archive GUI** now ready! The interactive image search, filtering and visualization tool is now ready ().
- The **ZTF Twitter account** is now active! <https://twitter.com/ztfsurvey> Re-tweet @ztfsurvey!
- To use the **url shortener** (e.g. during telecons, talks, in emails), navigate to <http://zwicky.tf/shorten> (username: ztf password: 16chips) and type in the URL you want shortened.
- The **Wiki page** is active! Check it out at <http://zwicky.tf/wiki>. To request access, please email us at [ZTF.communication.coordinators@gmail.com](mailto:ZTF.communication.coordinators@gmail.com)

*"Donuts, is there anything they can't do?"* Matt Groening

**Happy Hanukkah!**

Have a great and productive week!  
Thomas and Maayane